



In this issue

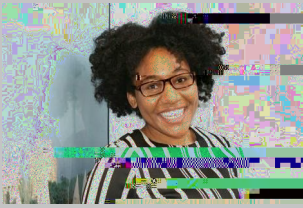
- PSS meeting in LN-2200 on Wednesday
- Staff Community Service Survey
- Reach out to Risk Management and Administrative Compliance
- Bear Necessities Food Pantry - Donations needed
- Colleague Connections Program
- Professional staff profile - Meet Elise Thornley
- Thank you for attending the Spring Networking Event!

W]&[{ ä } * Á Ú Û Ü Á { ^ ^ c ä } * Á ä } Á Š Þ Ë Ğ Ğ € € Á [} Á Y ^ á } ^ • å æ ^ Á

PSS will be meeting from 3:15 to 4:30 p.m. May 17, in LN-2200. Meetings are open to all professionals. For more information, refer to the [PSS website](#).

Ù c æ ~ Á Ô [{ { ~ } ä c ^ Á Û ^ ! ç ä & ^ Á Û ^ ! ç ^ ^

The Professional Staff Senate is leading an effort to collect information about how staff members support the local community through volunteering, board membership, coaching, or other commitments, on behalf of Binghamton University. We seek to collect information on your service each calendar year. The University hopes to get a



Ô [{] | i æ } & ^

Anreka Gordon, a coordinator in the Office of Risk Management and Administrative Compliance (RMAC), is

professional after graduation. Now I'm able to make an even bigger impact within our department. :)

HY`` i'g'gc a Yh\]b[' i b]e i Y'cf' bch' kY``_bc kb'UVc i h'mc i f'XYdUfh a Ybhz'WYbhYf'cf
1 _ QJj ! ° a Q f \ ~ a Xh S c]\ fU \ ~